

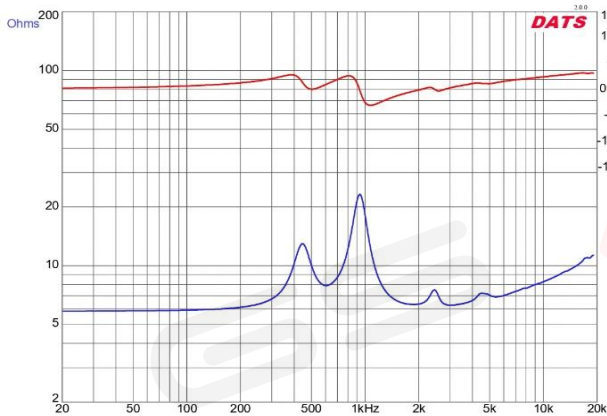


General Specifications

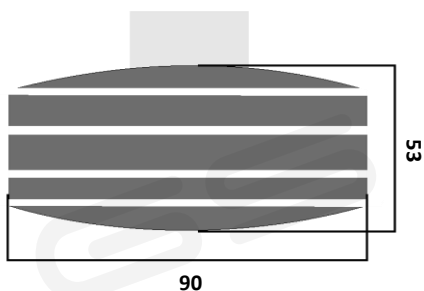
Nominal Diameter	90 mm
Impedance	8 Ohm
Minimum Impedance	5.8 Ohm
Power RMS	130 WRMS
Max Power (2)	200 WMAX
Frequency Range	1.2 kHz ÷ 9 kHz
Sensibility (1W - 1mt)	104 dB
Sensibility (2.83V)	105.5 dB
Voice coil Diameter	35 mm
Voice coil Wire	CCAW
Voice coil winding height	3 mm
Voice coil material	kapton

Thiele&Small Parameter

Re (Ohm)	5.80
Fs (Hz)	934.68
Le (mH)	0.096
Qts	1.59
Qms	6.35
Qes	2.12



Drawing dimension / installation



Technical Parameter

Magnet material	ferrite
Magnet dimension	90x15 mm
Gap height	5 mm
Power advice minimum	30 WRMS
Terminal connection	push terminal
Demulation ring	yes, copper

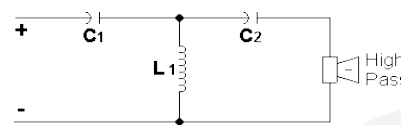
Dimension Speaker / Package

Outer diameter	90 mm
Mounting depth	53 mm
Volume speaker	0.7 l
Speaker weight	0.9 kg
Package weight	1.2 kg
Shipping box driver	9.5x9.5x8.3 cm

For a clearer sound it is recommended:

Crossover HPF advice

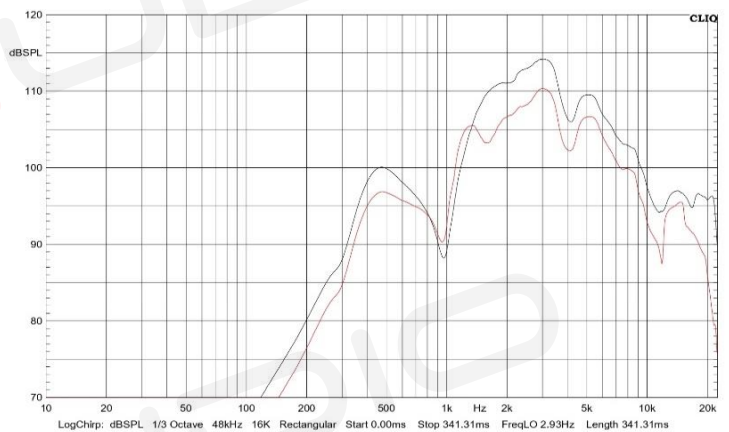
2500 Hz - 18 dB



C1= 6.7 uF

C2= 20.2 uF

L1= 0.30 mH



Legend: — + 100mm HORN — + 129mm HORN